

**PRINCIPAL PARTICULARS**

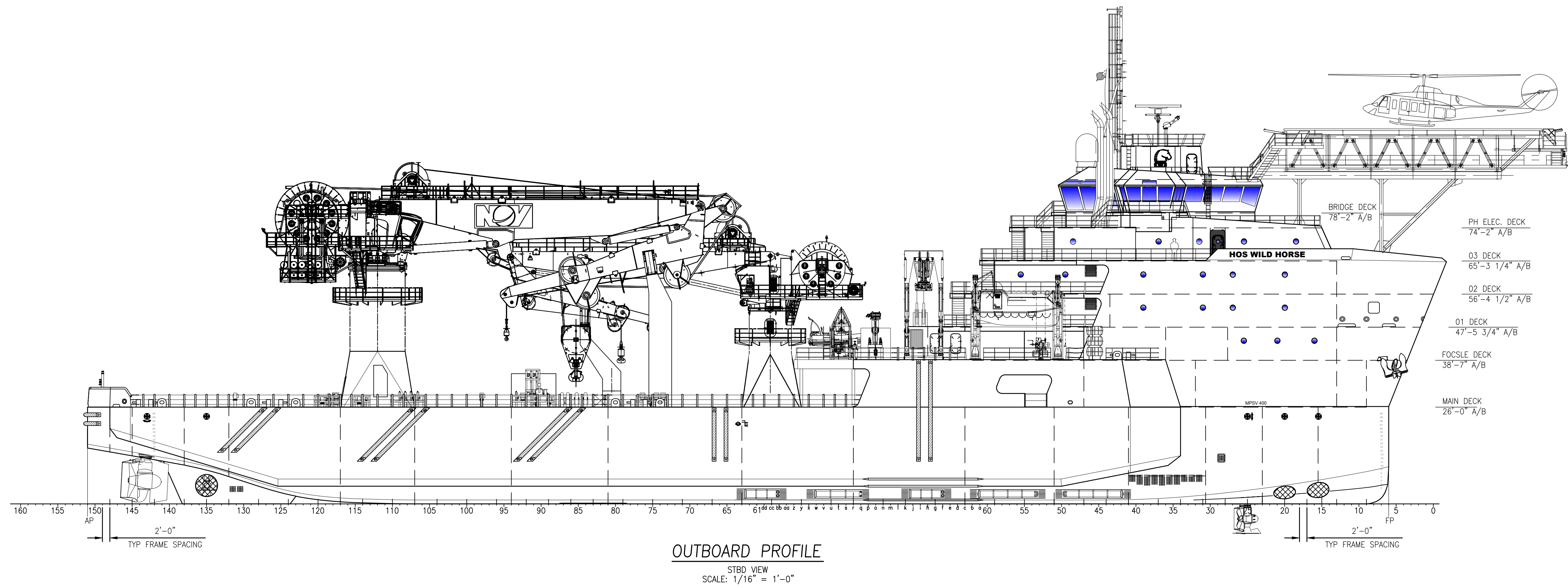
LOA	365'-6"
LBP - LWL	350'-0"
BEAM	64'-0" (76'-0" W/SPONSONS)
DEPTH	26'-0"
LOADLINE DRAFT	TBD
DESIGN DECK LOAD	10 MT/SQ. M (2048 LBS/SQ. FT) FR. r TO STERN
GENERATORS	(4) x 2,250 KW @ 1,800 RPM (WATER-COOLED)
AUXILIARY GENERATORS	(2) x 1,725 KW @ 1,800 RPM (WATER-COOLED)
TOTAL KILOWATTS	12,450 KW @ 690 VAC
MAIN PROPULSION	(2) x 2,500 KW @ 620 VAC @ 1,000 RPM (6,704 HP TOTAL)
BOW THRUSTERS	(2) x 880 KW @ 620 VAC @ 1,200 RPM (2,360 HP TOTAL) FIXED PITCH VFD /REVERSING MOTORS
	(1) x 880 KW @ 620 VAC @ 1,200 RPM (1,180 HP TOTAL) CONTROLLABLE PITCH VFD /NON-REVERSING MOTOR
STERN THRUSTER	(1) x 880 KW @ 620 VAC @ 1,200 RPM (1,180 HP) FIXED PITCH VFD/REVERSING MOTORS
FIRE MONITORS	(2) x 5284 GPM/(495 KW @ 690 VAC) /394' REACH-REMOTE CONTROLLED FIRE MONITORS
REGULATORY	USCG SUB I & L /SOLAS/ABS A1, OFFSHORE SERVICE VESSEL, AMS, DPS-2, SPS, GP, RRDA, HELIDK, ACCU, ENVIRO, UWILD, FFV I, CRC, OFFSHORE SUPPORT VESSEL (HLC, HNLS, HDC), ©

**SUMMARY TABLE**

ACCOMMODATIONS	102 (7x4 MAN, 2x3 MAN, 31x2 MAN, 6x1 MAN)
STATEROOMS	46
HEADS	41
LOUNGE	1
LAUNDRY AREA	1
GALLEY	1
MESS AREA	1
SICK BAY (BERTHS)	3

**APPROX TANK CAPACITIES**

BALLAST	864,163 US GAL
FUEL OIL	588,658 US GAL
FRESH WATER	178,312 US GAL
METHANOL	4,894 BARRELS
LIQUID MUD	14,181 BARRELS

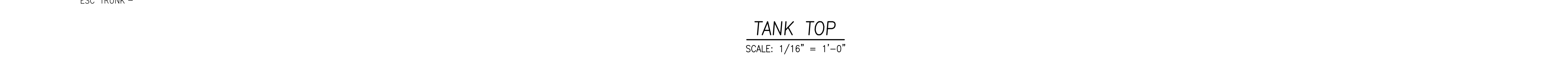
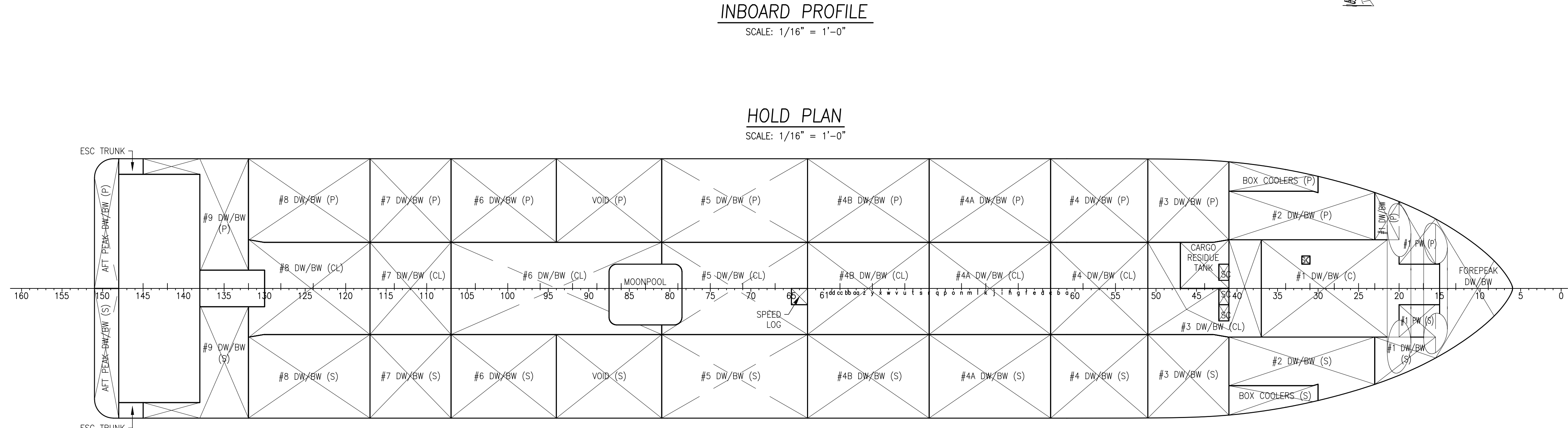
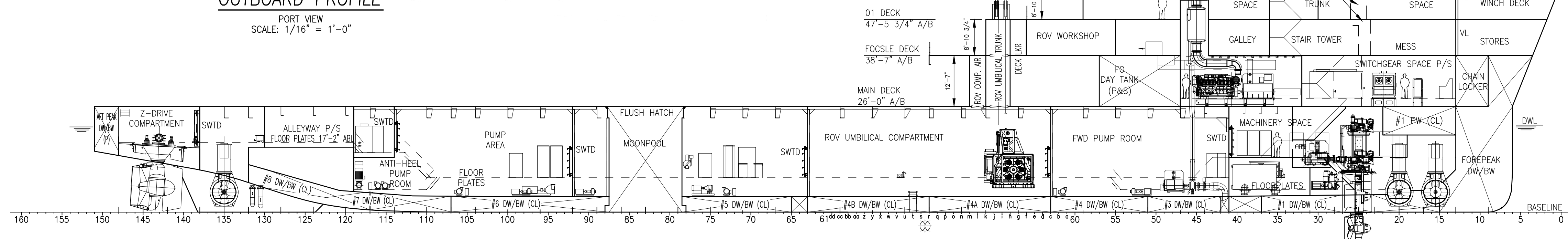
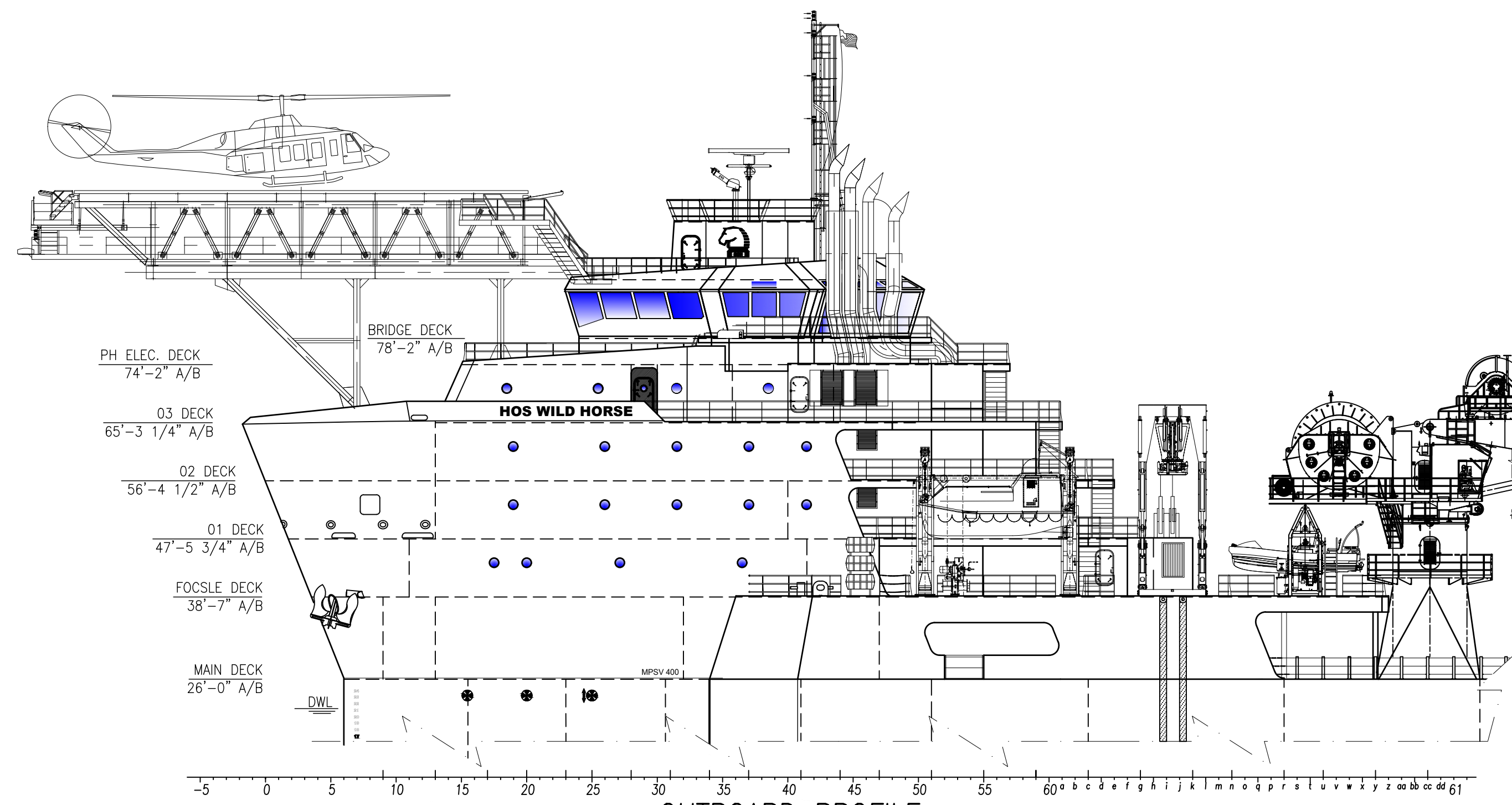


**HOSMAX 400ES / HOS WILD HORSE**

THIS DRAWING, DESIGN CONCEPT AND SPECIFICATIONS ARE THE PROPERTY OF HORNBECK OFFSHORE SERVICES AND ARE FURNISHED ON A CONFIDENTIAL BASIS WITH AN EXPRESSED UNDERSTANDING THAT THEY WILL NOT BE COPIED IN ANY MANNER USED FOR MANUFACTURE, SOLD, TRANSFERRED, NOR USED TO THE DETRIMENT OF SAID FIRM WITHOUT WRITTEN PERMISSION. HOS ©

**HORNBECK OFFSHORE SERVICES**

DRAWN BY: S. MAUL	365'-6" X 76'-0" X 26'-0"			SIZE D
CHECKED BY: J. GUIDRY	<b>OUTBOARD PROFILE &amp; GENERAL ARRANGEMENT</b>			REV. 1.1
APPROVED BY: C. ANNESSA	TASK No. 8028	DRAWING No. 1,001	SCALE: AS NOTED DATE: 01/06/21 SHEET 1 OF 5	

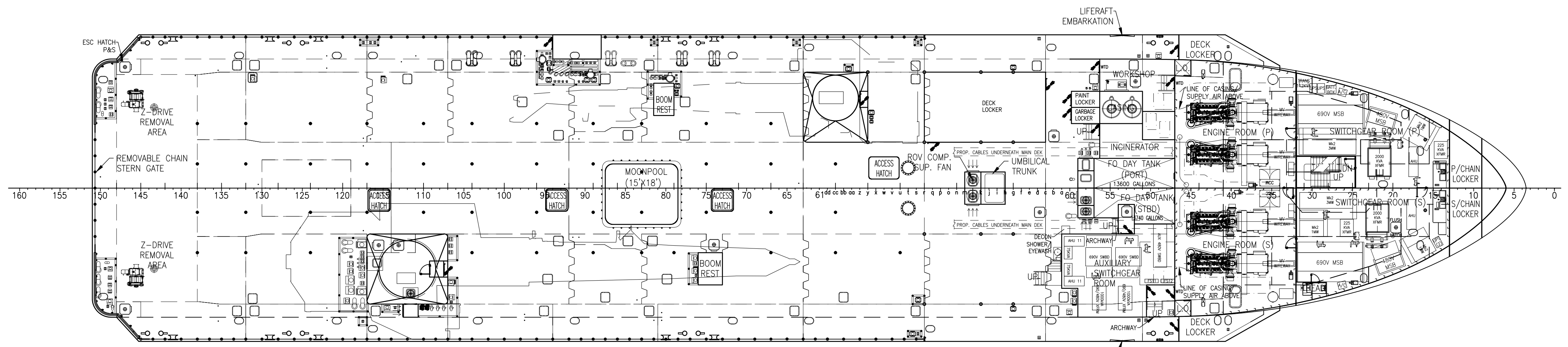


	THIS DRAWING, DESIGN CONCEPT AND SPECIFICATIONS ARE THE PROPERTY OF HORNBECK OFFSHORE SERVICES AND ARE FURNISHED ON A CONFIDENTIAL BASIS WITH AN EXPRESSED UNDERSTANDING THAT THEY WILL NOT BE COPIED IN ANY MANNER USED FOR MANUFACTURE, SALE, TRANSFERRED, NOR USED TO THE DETRIMENT OF SAID FIRM WITHOUT WRITTEN PERMISSION.			<b>OUTBOARD PROFILE &amp; GENERAL ARRANGEMENT</b> SIZE D
	TASK No.	DRAWING No.	SCALE: AS NOTED	
	HULL No. 370	8028	1,001	

HORNBECK OFFSHORE SERVICES

D

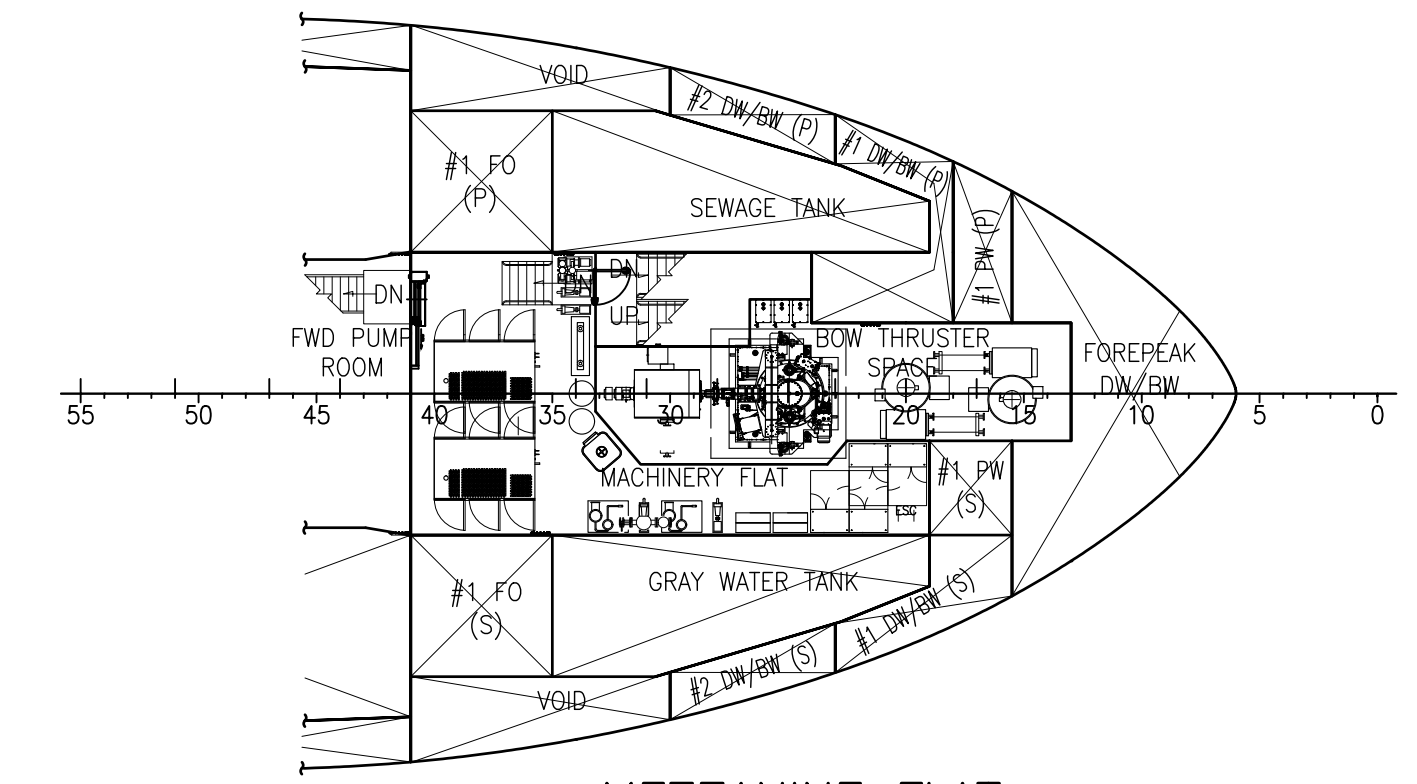
D



**MAIN DECK**  
26'-0" ABL  
SCALE: 1/16" = 1'-0"

C

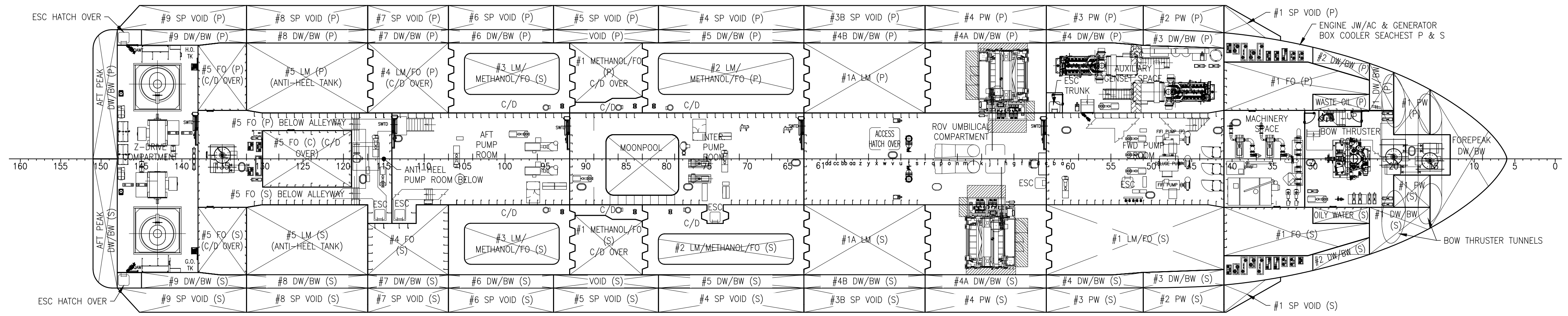
C



**MEZZANINE FLAT**  
13'-6" ABL  
SCALE: 1/16" = 1'-0"

B

B

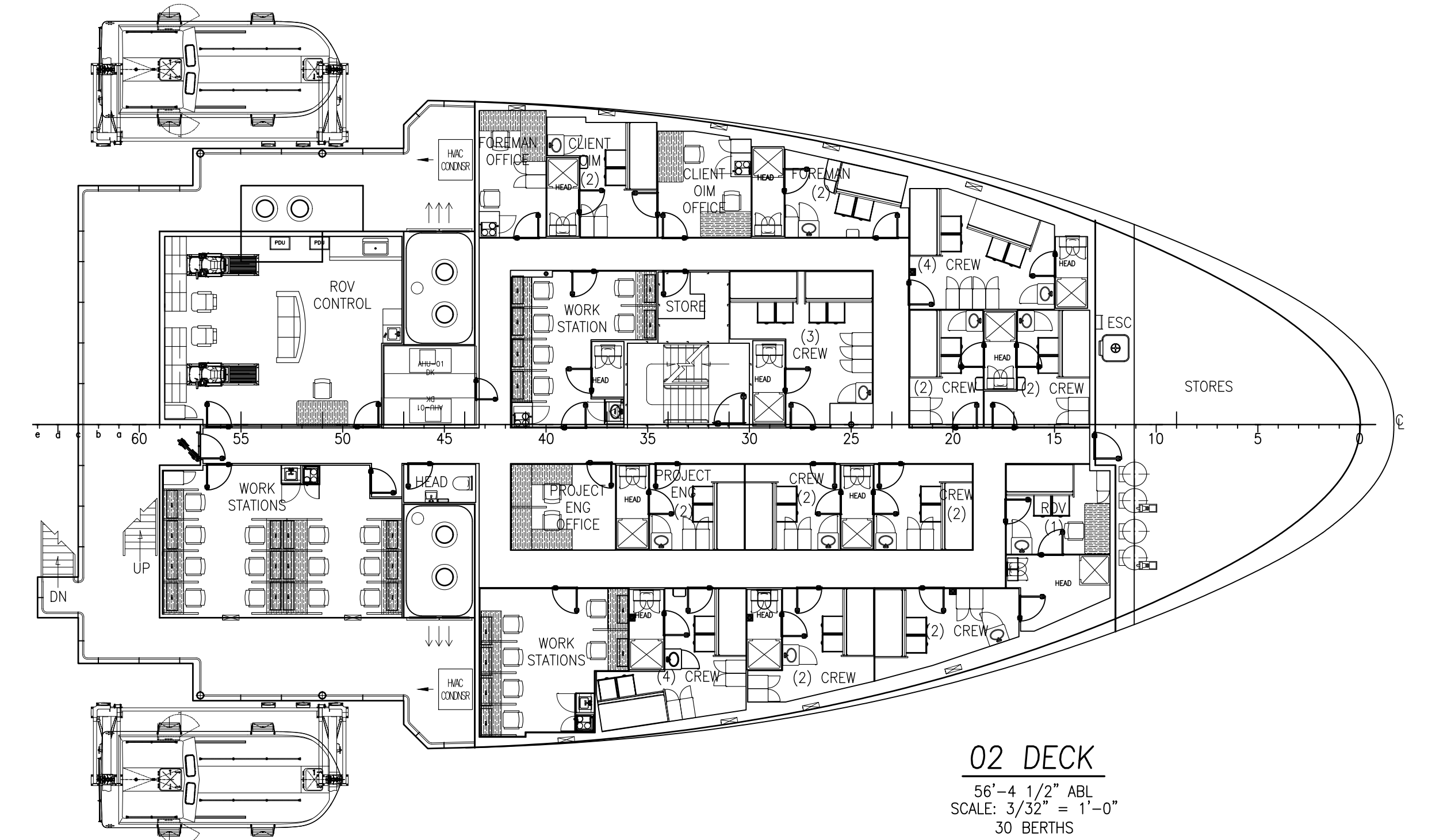
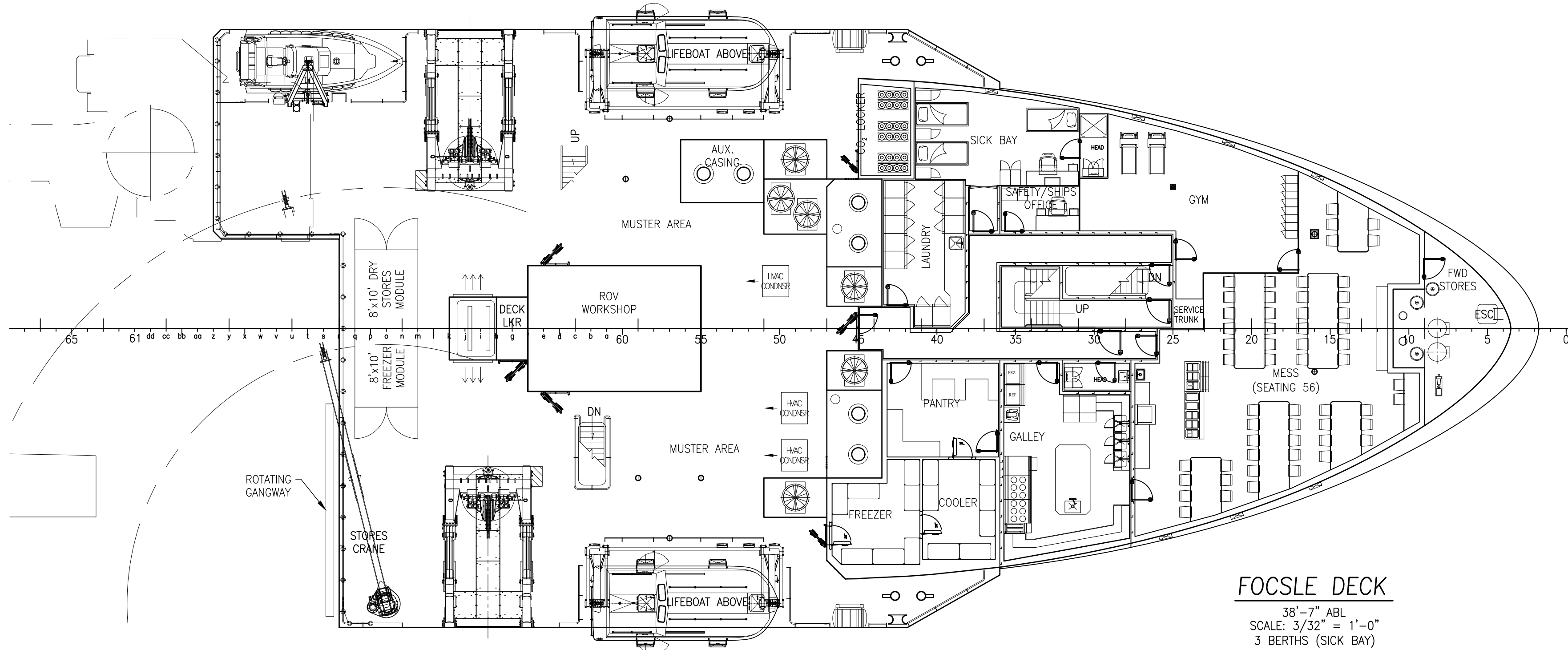
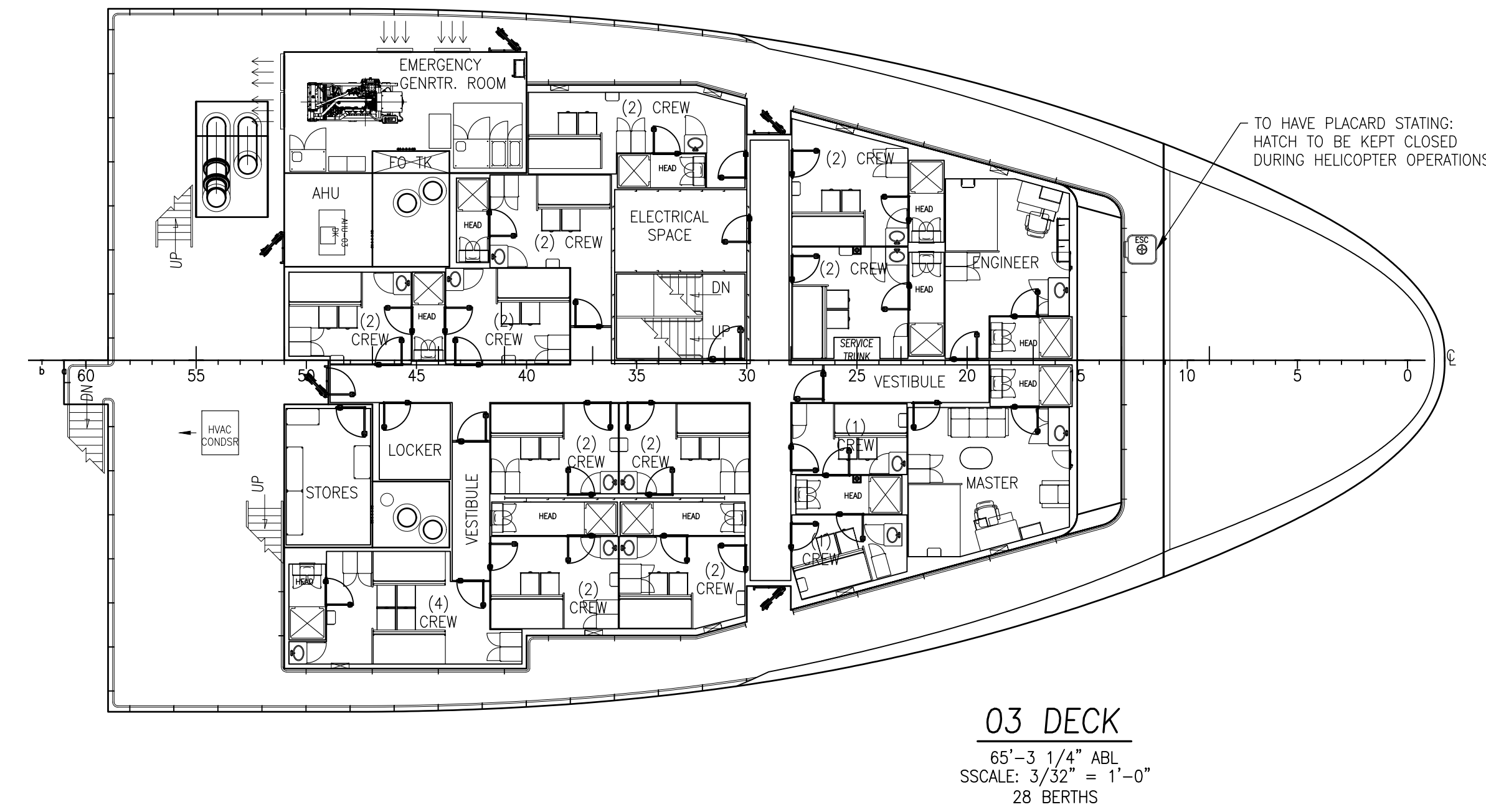
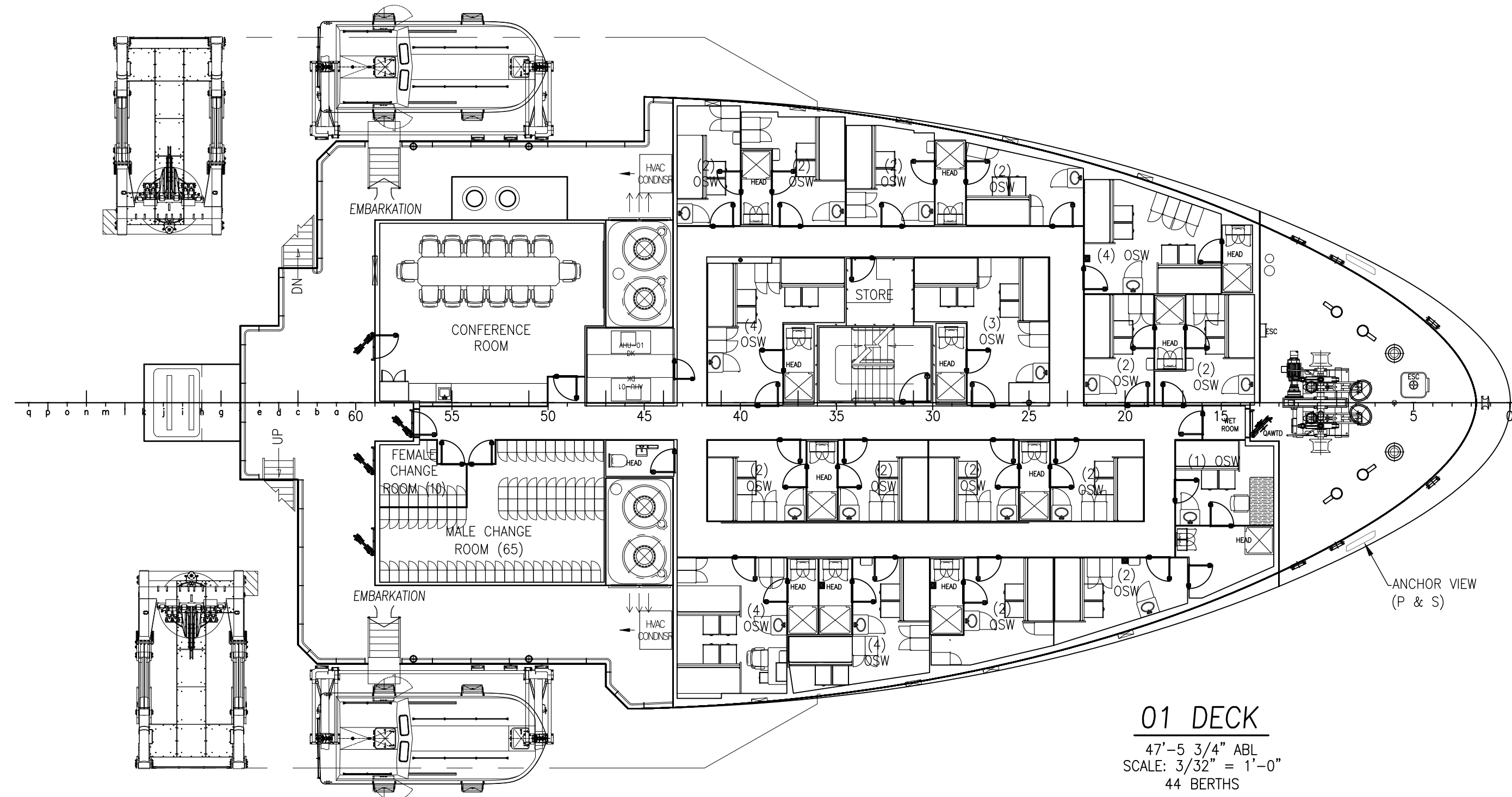


**HOLD PLAN**  
SCALE: 1/16" = 1'-0"

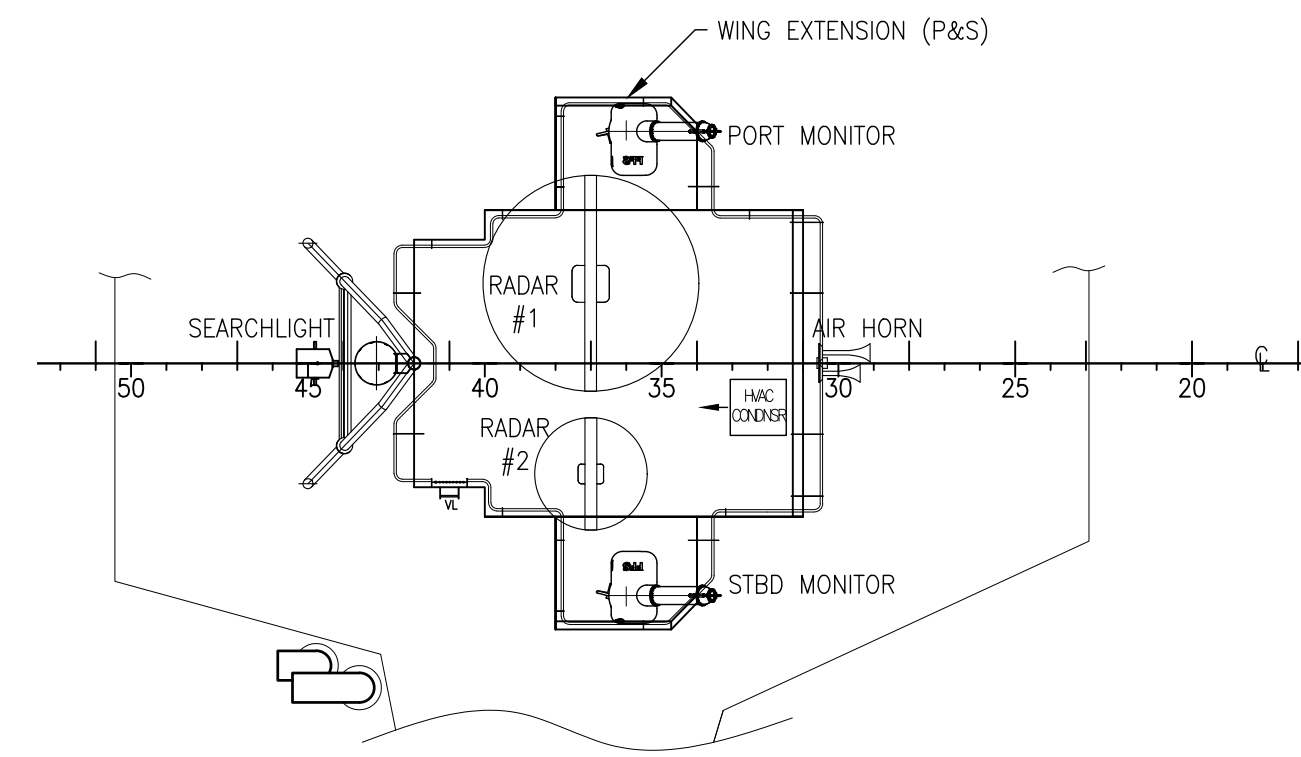
A

A

	THIS DRAWING, DESIGN CONCEPT AND SPECIFICATIONS ARE THE PROPERTY OF HORNBECK OFFSHORE SERVICES AND ARE FURNISHED ON A CONFIDENTIAL BASIS WITH AN EXPRESSED UNDERSTANDING THAT THEY WILL NOT BE COPIED IN ANY MANNER USED FOR MANUFACTURE, SALE, TRANSFERRED, NOR USED TO THE DETRIMENT OF SAID FIRM WITHOUT WRITTEN PERMISSION.			HORNBECK OFFSHORE SERVICES	
	<b>OUTBOARD PROFILE &amp; GENERAL ARRANGEMENT</b>				
	TASK No. 8028	DRAWING No. 1.001	SCALE: AS NOTED DATE: 01/06/21		REV. 1.1
	HULL No. 370	SY: ESG	SHEET 3 OF 5		SIZE D

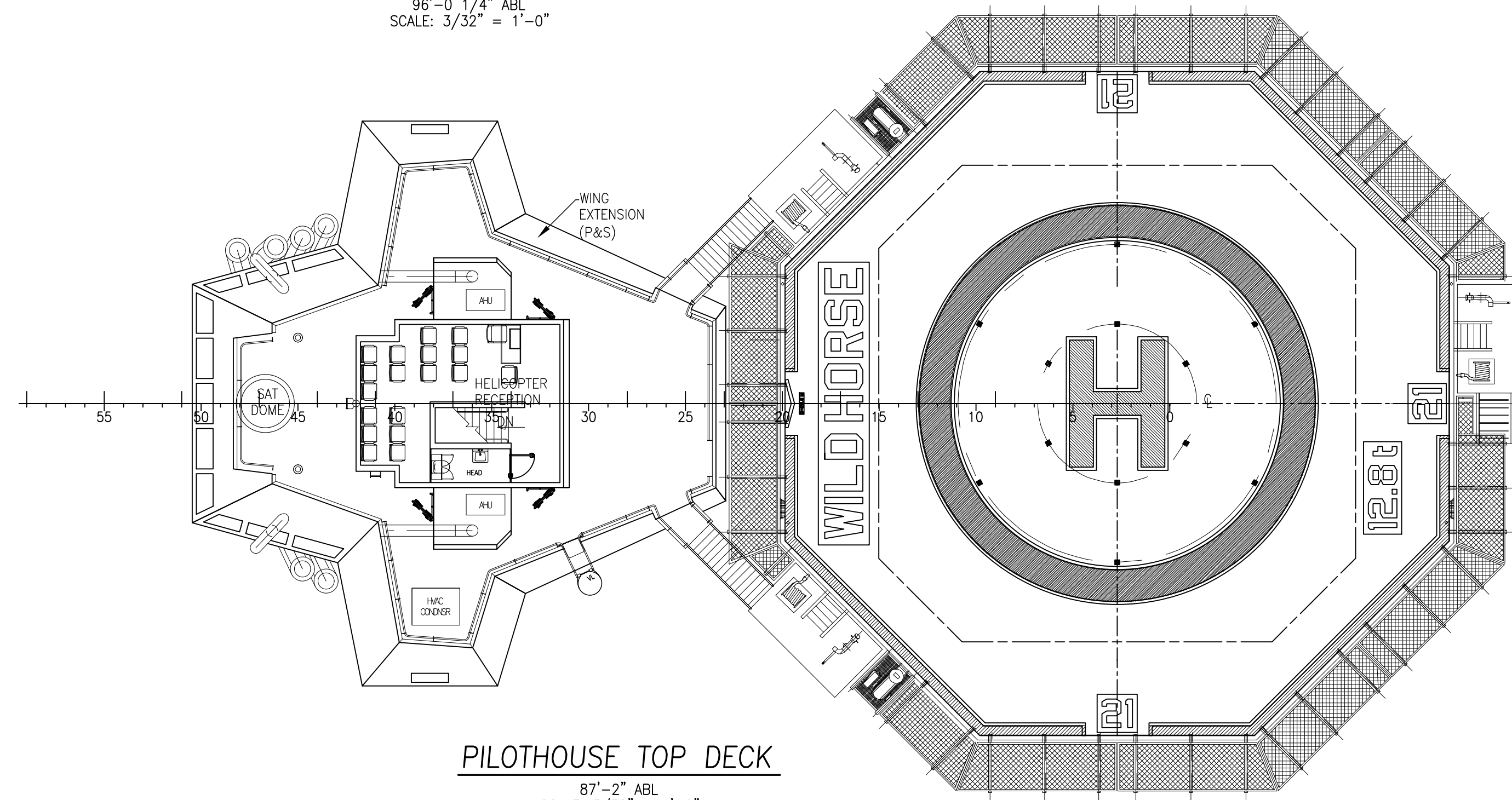


<p>HORNBECK OFFSHORE SERVICES</p>	THIS DRAWING, DESIGN CONCEPT AND SPECIFICATIONS ARE THE PROPERTY OF HORNBECK OFFSHORE SERVICES AND ARE FURNISHED ON A CONFIDENTIAL BASIS WITH AN EXPRESSED UNDERSTANDING THAT THEY WILL NOT BE COPIED IN ANY MANNER USED FOR MANUFACTURE, SALE, TRANSFERRED, NOR USED TO THE DETRIMENT OF SAID FIRM WITHOUT WRITTEN PERMISSION.			<b>OUTBOARD PROFILE &amp; GENERAL ARRANGEMENT</b> SIZE D
	TASK No.	DRAWING No.	SCALE: AS NOTED	
	8028	1.001	DATE: 01/06/21	
	HULL No. 370	SY: ESG	SHEET 4 OF 5	



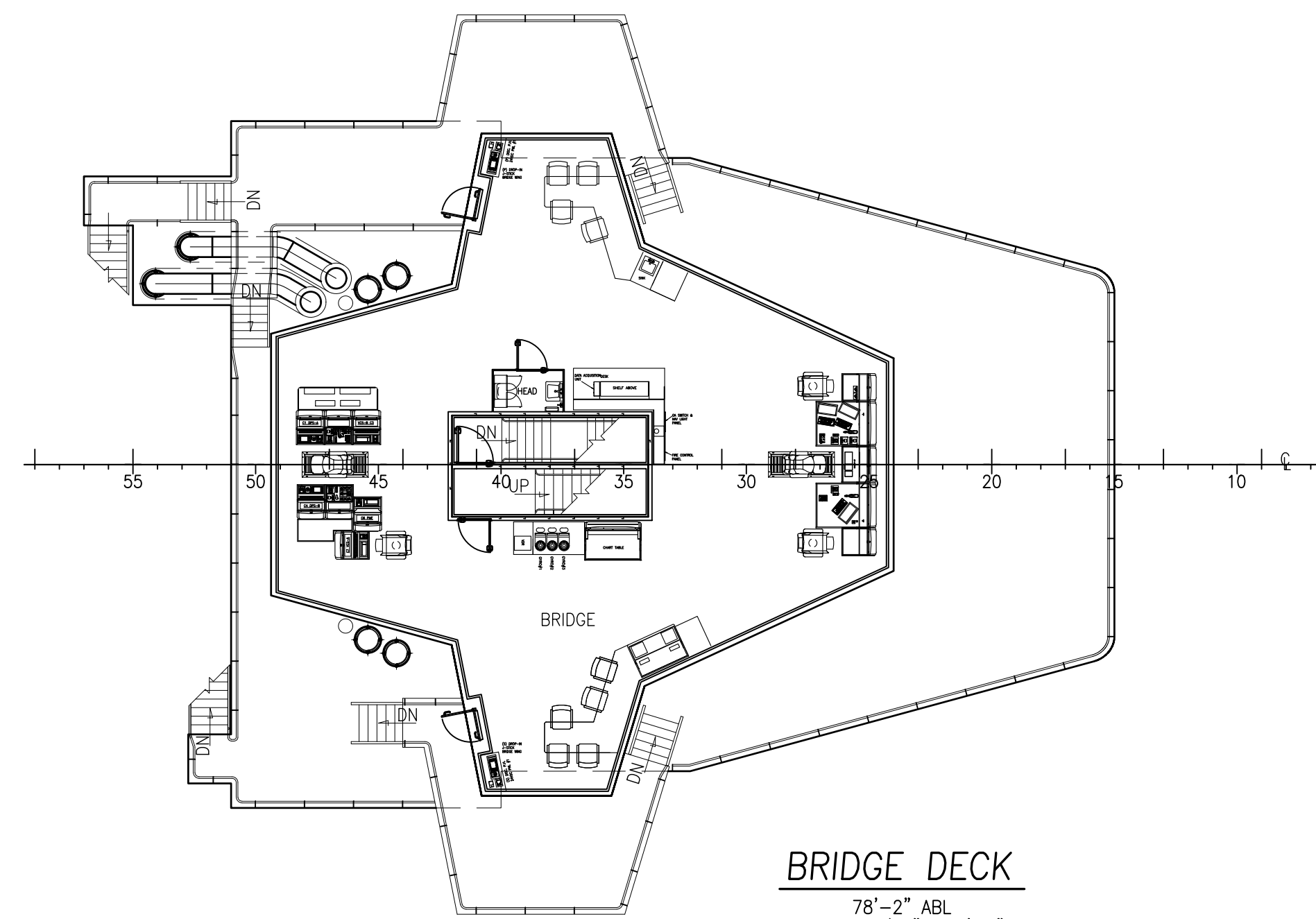
**HELIDECK RECEPTION TOP**

96'-0 1/4" ABL  
SCALE: 3/32" = 1'-0"



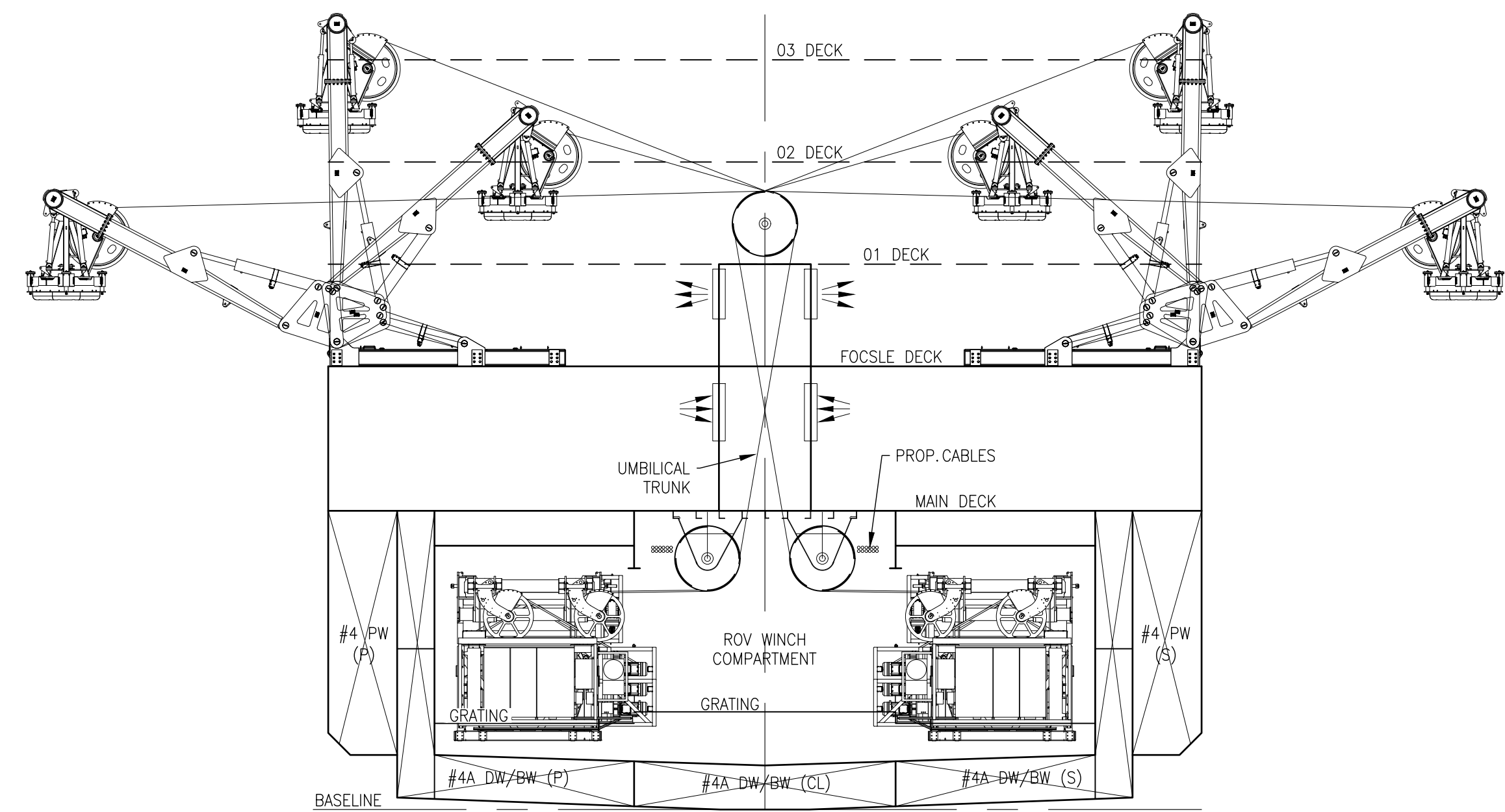
**PILOTHOUSE TOP DECK**

87'-2" ABL  
SCALE: 3/32" = 1'-0"



**BRIDGE DECK**

78'-2" ABL  
SCALE: 3/32" = 1'-0"



**SECTION AR FR J**

LOOKING FWD  
ROV WINCH & UMBILICAL ARRANGEMENT  
SCALE: 3/32" = 1'-0"