

PRINCIPAL PARTICULARS

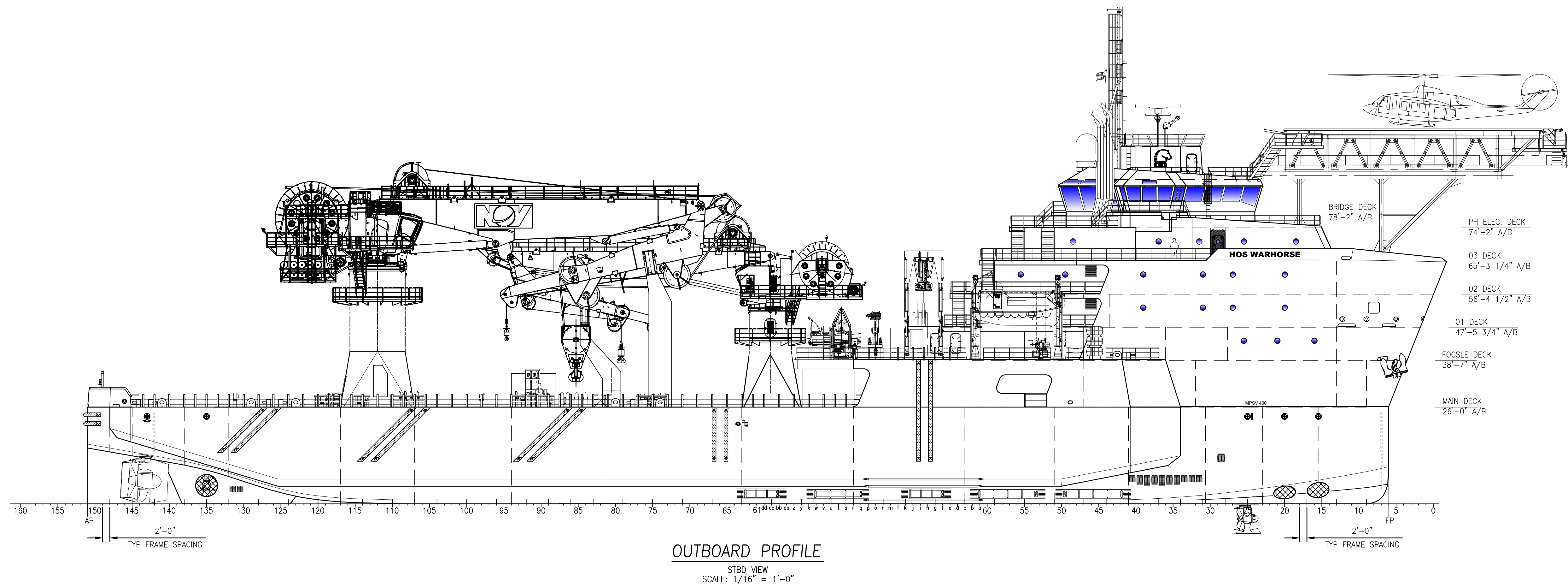
LOA	365'-6"
LBP - LWL	350'-0"
BEAM	64'-0" (76'-0" W/SPONSONS)
DEPTH	26'-0"
LOADLINE DRAFT	TBD
DESIGN DECK LOAD	10 MT/SQ. M (2048 LBS/SQ. FT) FR. r TO STERN
GENERATORS	(4) x 2,250 KW @ 1,800 RPM (WATER-COOLED)
AUXILIARY GENERATORS	(2) x 1,725 KW @ 1,800 RPM (WATER-COOLED)
TOTAL KILOWATTS	12,450 KW @ 690 VAC
MAIN PROPULSION	(2) x 2,500 KW @ 620 VAC @ 1,000 RPM (6,704 HP TOTAL)
BOW THRUSTERS	(2) x 880 KW @ 620 VAC @ 1,200 RPM (2,360 HP TOTAL) FIXED PITCH VFD /REVERSING MOTORS (1) x 880 KW @ 620 VAC @ 1,200 RPM (1,180 HP TOTAL) CONTROLLABLE PITCH VFD /NON-REVERSING MOTOR
STERN THRUSTER	(1) x 880 KW @ 620 VAC @ 1,200 RPM (1,180 HP) FIXED PITCH VFD/REVERSING MOTORS
FIRE MONITORS	(2) x 5284 GPM/(495 KW @ 690 VAC) /394' REACH-REMOTE CONTROLLED FIRE MONITORS
REGULATORY	USCG SUB I & L /SOLAS/ABS A1, OFFSHORE SERVICE VESSEL, AMS, DPS-2, SPS, GP, RRDA, HELIDK, *ACCU, ENVIRO, UWILD, FFV I, CRC, OFFSHORE SUPPORT VESSEL (HLC, HNLS, HDC), ©

SUMMARY TABLE

ACCOMMODATIONS	102 (7x4 MAN, 2x3 MAN, 31x2 MAN, 6x1 MAN)
STATEROOMS	46
HEADS	41
LOUNGE	1
LAUNDRY AREA	1
GALLEY	1
MESS AREA	1
SICK BAY (BERTHS)	3

APPROX TANK CAPACITIES

BALLAST	864,163 US GAL
FUEL OIL	588,658 US GAL
FRESH WATER	178,312 US GAL
METHANOL	4,894 BARRELS
LIQUID MUD	14,181 BARRELS



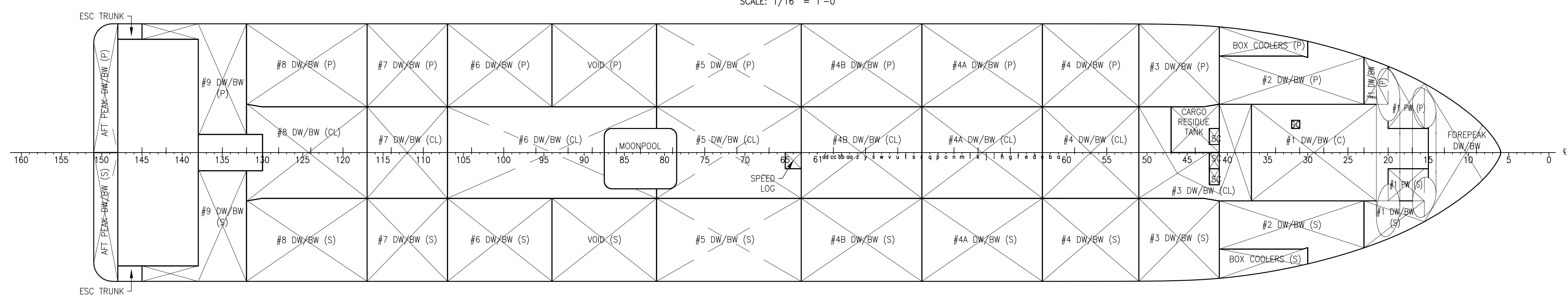
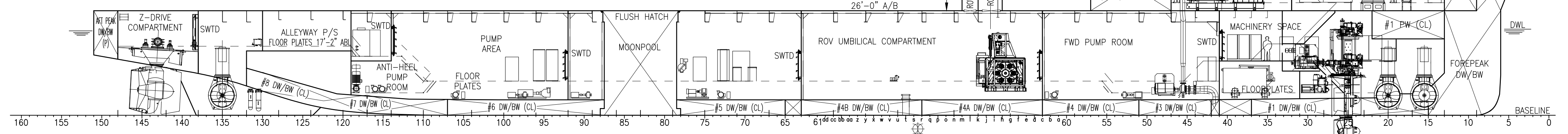
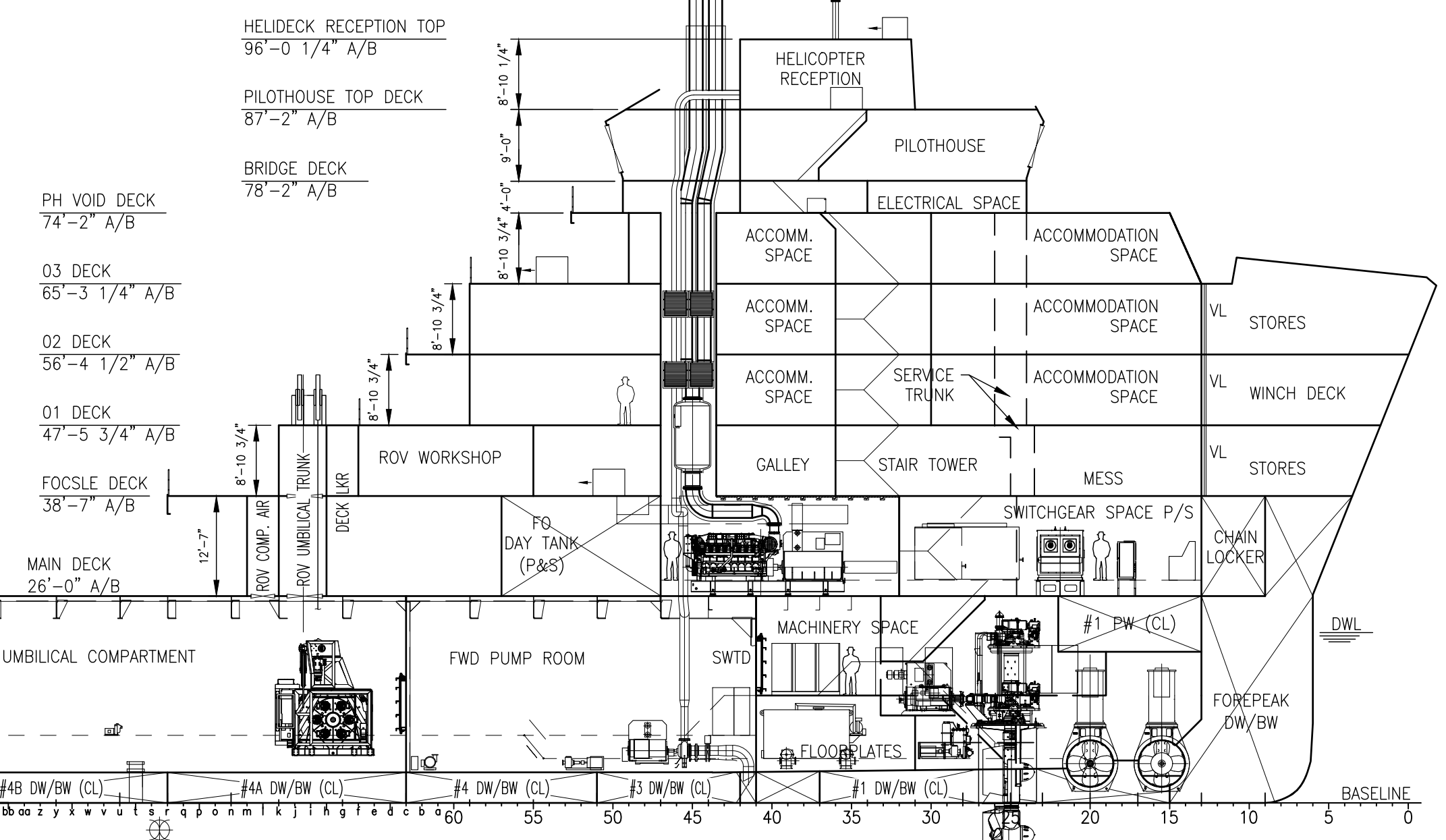
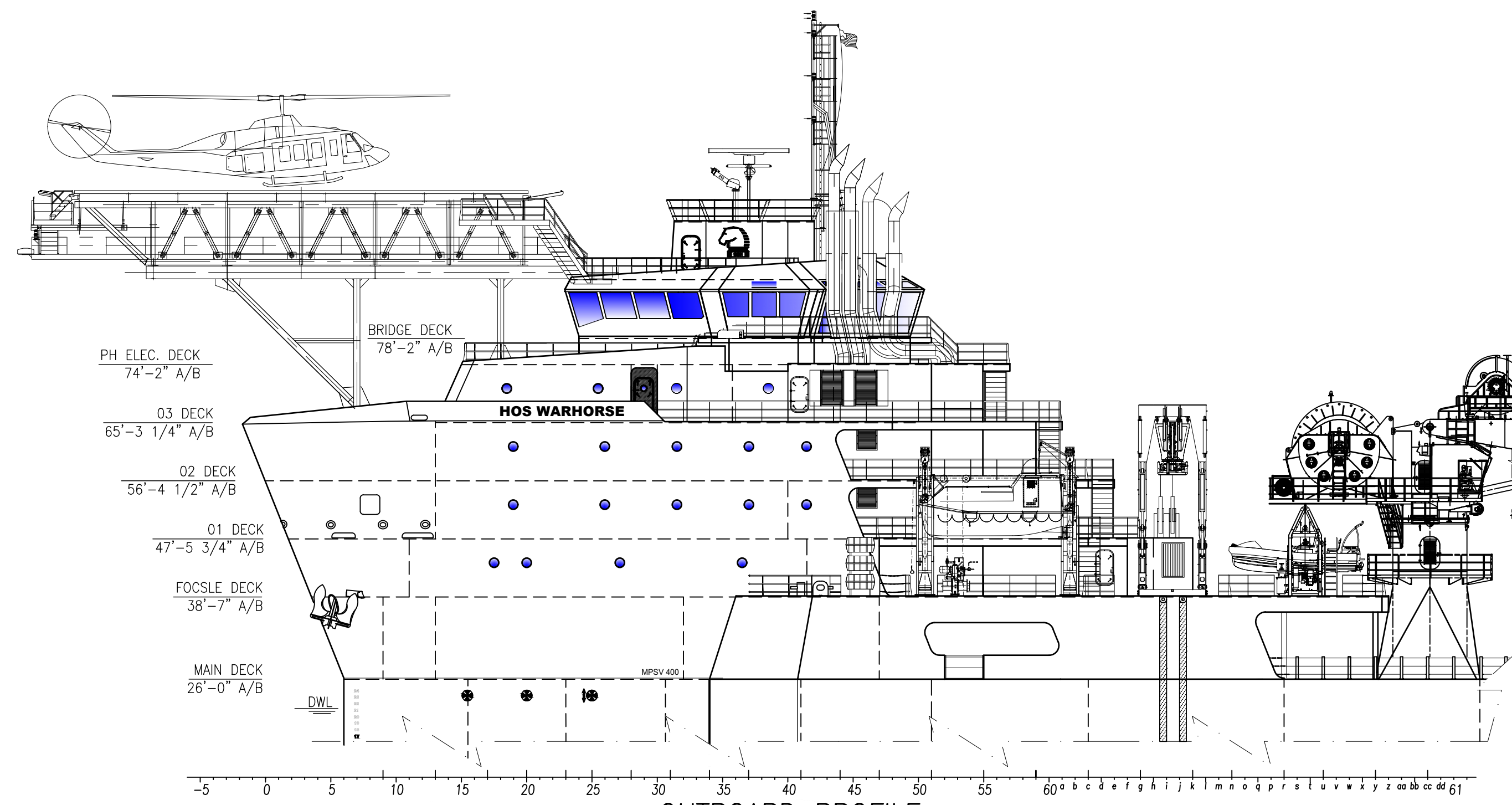
OUTBOARD PROFILE

STBD VIEW
SCALE: 1/16" = 1'-0"

HOSMAX 400ES / HOS WARHORSE

THIS DRAWING, DESIGN CONCEPT AND SPECIFICATIONS ARE THE PROPERTY OF HORNBECK OFFSHORE SERVICES AND ARE FURNISHED ON A CONFIDENTIAL BASIS WITH AN EXPRESSED UNDERSTANDING THAT THEY WILL NOT BE COPIED IN ANY MANNER USED FOR MANUFACTURE, SOLD, TRANSFERRED, NOR USED TO THE DETRIMENT OF SAID FIRM WITHOUT WRITTEN PERMISSION. HOS ©
HORNBECK OFFSHORE SERVICES

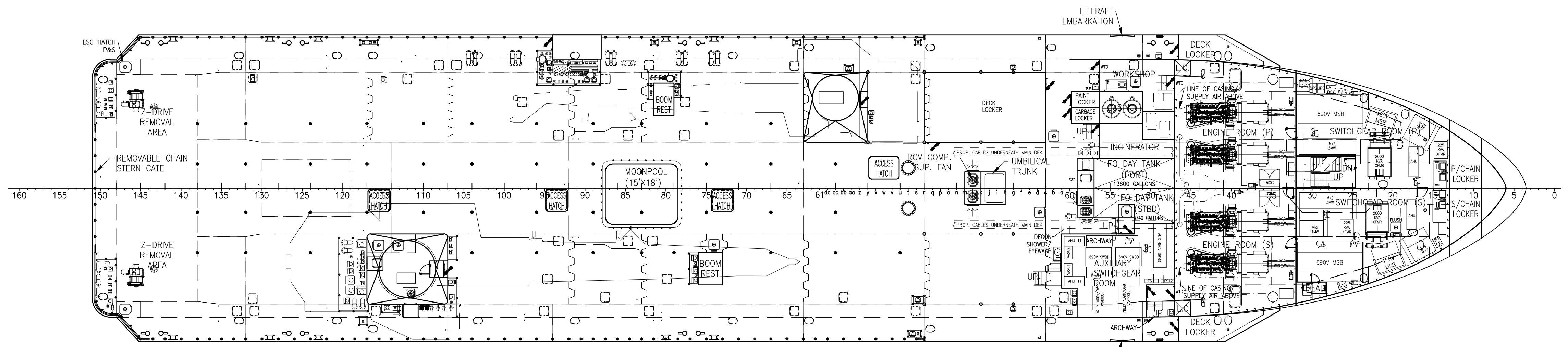
DRAWN BY: S. MAUL	365'-6" X 76'-0" X 26'-0"			SIZE D
CHECKED BY: J. GUIDRY	OUTBOARD PROFILE & GENERAL ARRANGEMENT			REV. 1.1
APPROVED BY: C. ANNESSA	TASK No. 8028	DRAWING No. 1,001	SCALE: AS NOTED DATE: 01/06/21 SHEET 1 OF 5	



	THIS DRAWING, DESIGN CONCEPT AND SPECIFICATIONS ARE THE PROPERTY OF HORNBECK OFFSHORE SERVICES AND ARE FURNISHED ON A CONFIDENTIAL BASIS WITH AN EXPRESSED UNDERSTANDING THAT THEY WILL NOT BE COPIED IN ANY MANNER USED FOR MANUFACTURE, SALE, TRANSFERRED, NOR USED TO THE DETRIMENT OF SAID FIRM WITHOUT WRITTEN PERMISSION.			OUTBOARD PROFILE & GENERAL ARRANGEMENT SIZE D
	TASK No. 8028 HULL No. 369	DRAWING No. 1.001 SY: ESG	SCALE: AS NOTED DATE: 01/06/21 SHEET 2 OF 5	

D

D

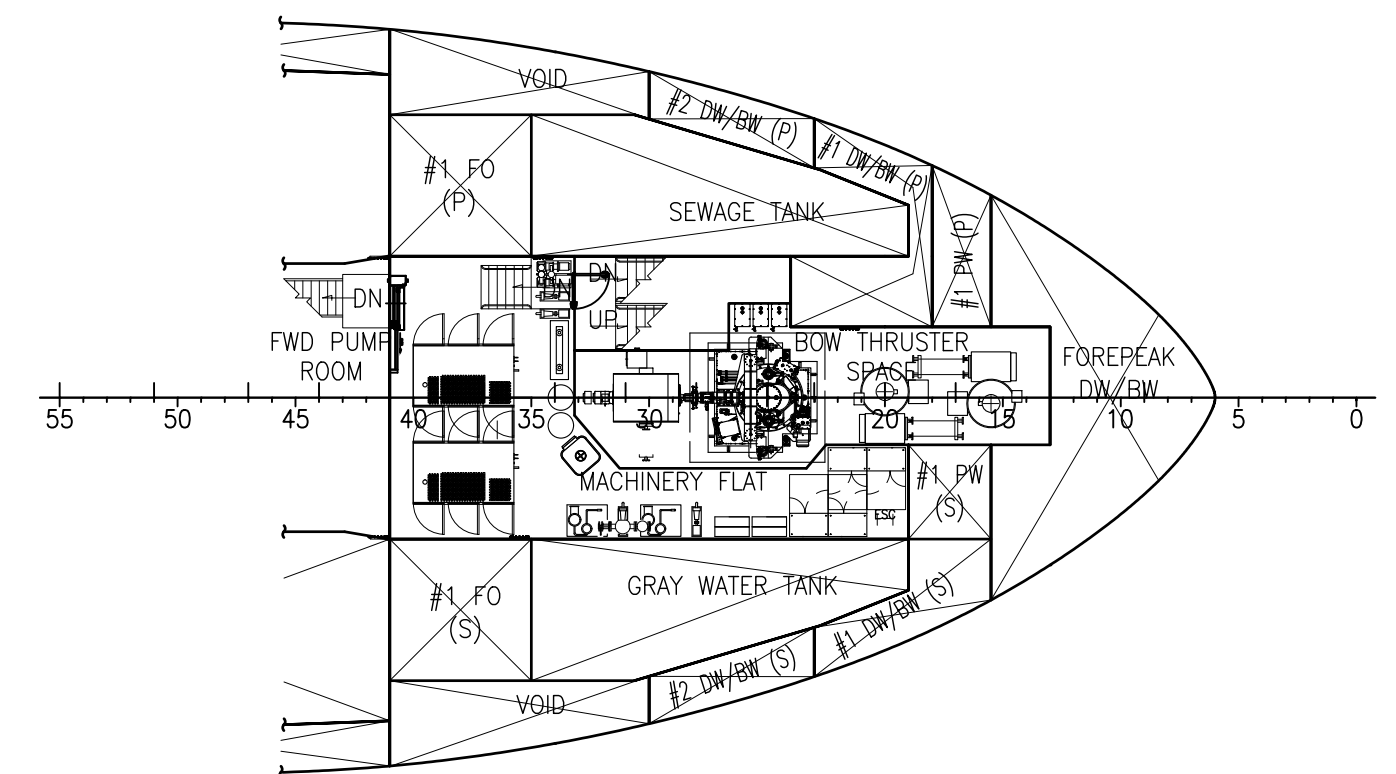


MAIN DECK

26'-0" ABL
SCALE: 1/16" = 1'-0"

C

C

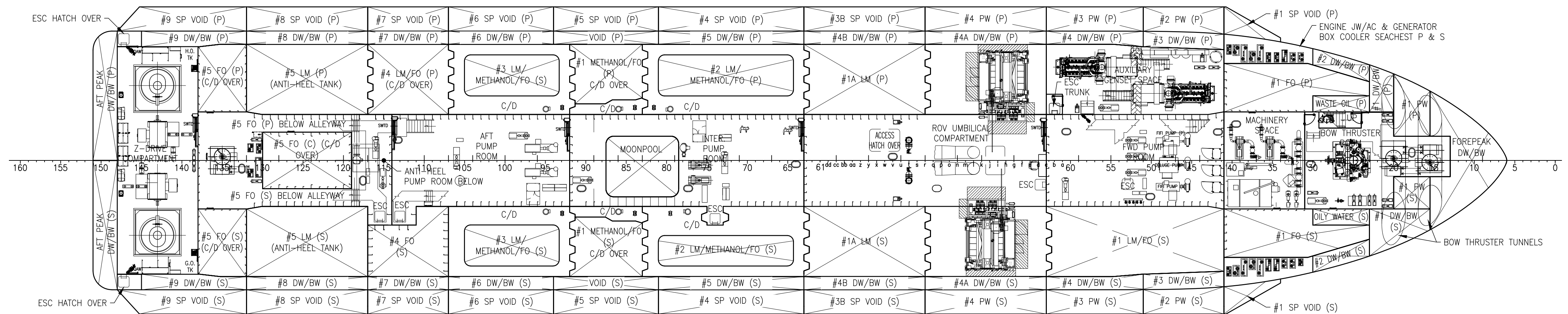


MEZZANINE FLAT

13'-6" ABL
SCALE: 1/16" = 1'-0"

B

B



HOLD PLAN

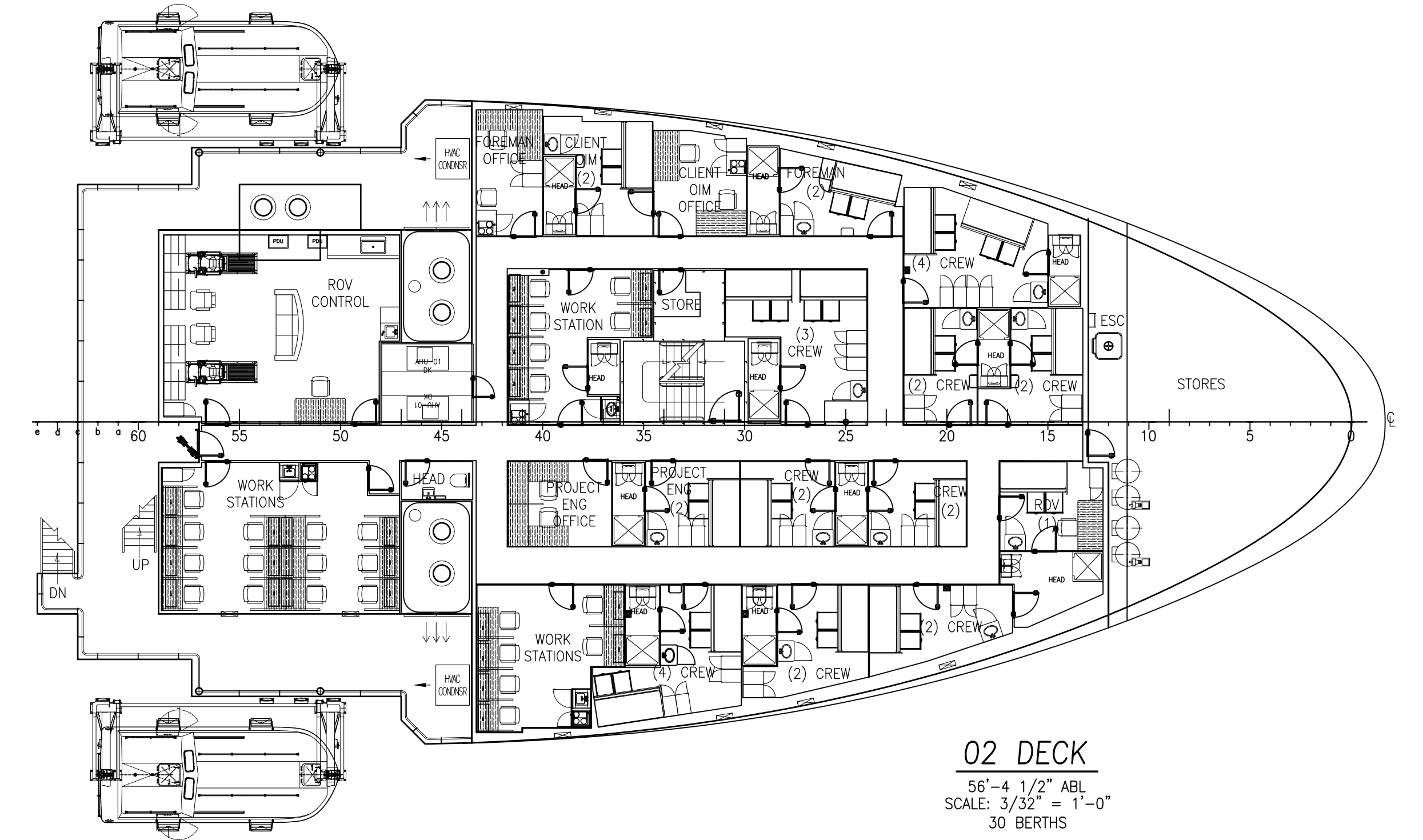
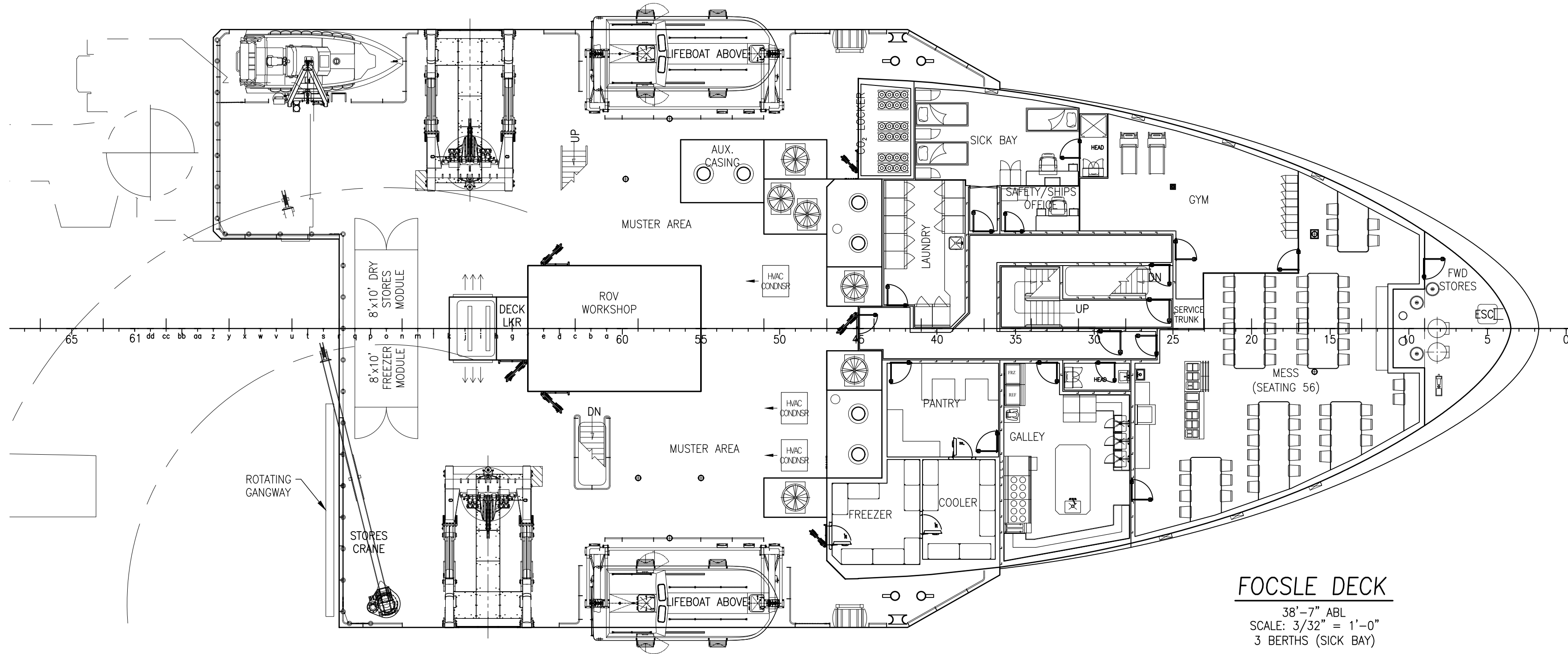
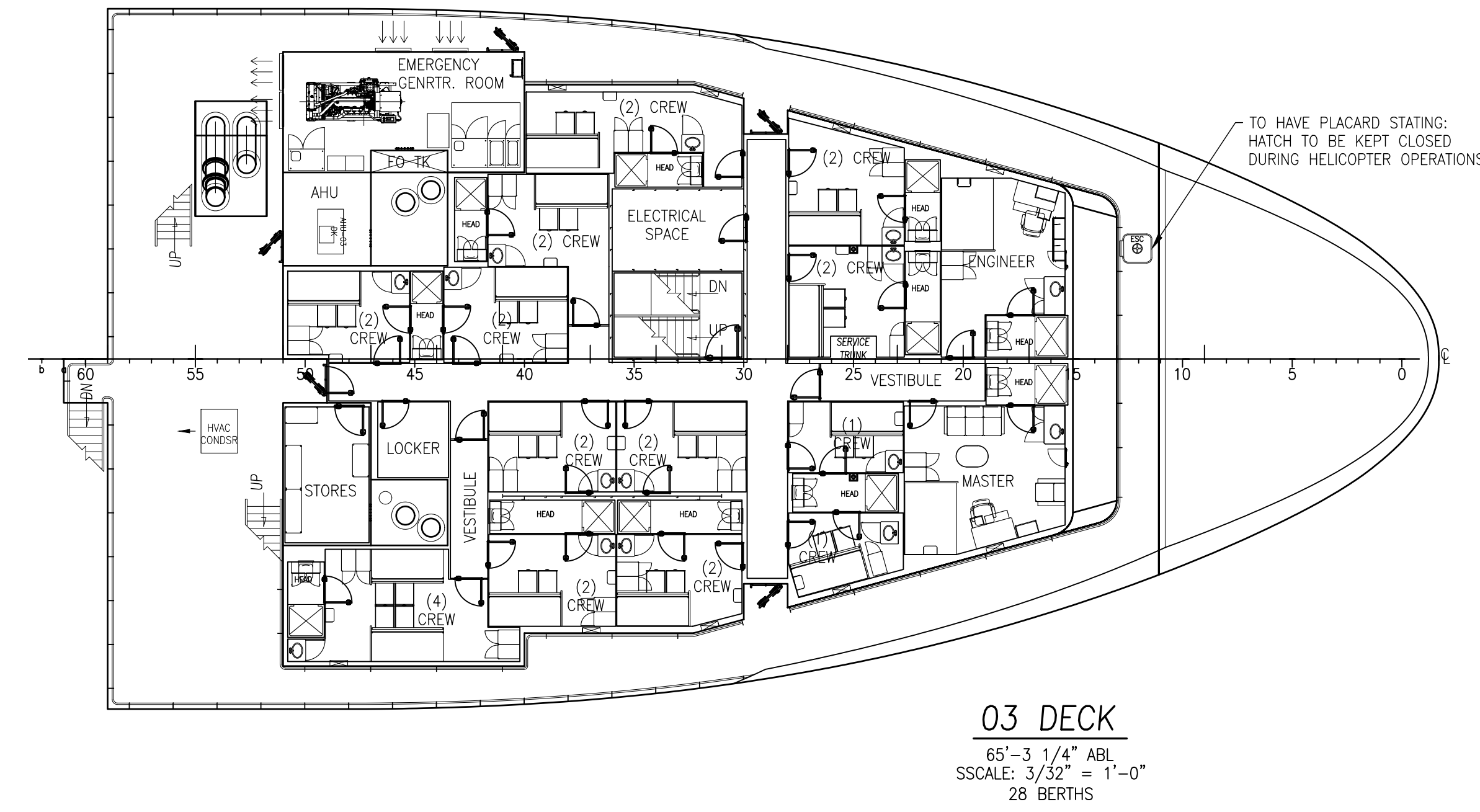
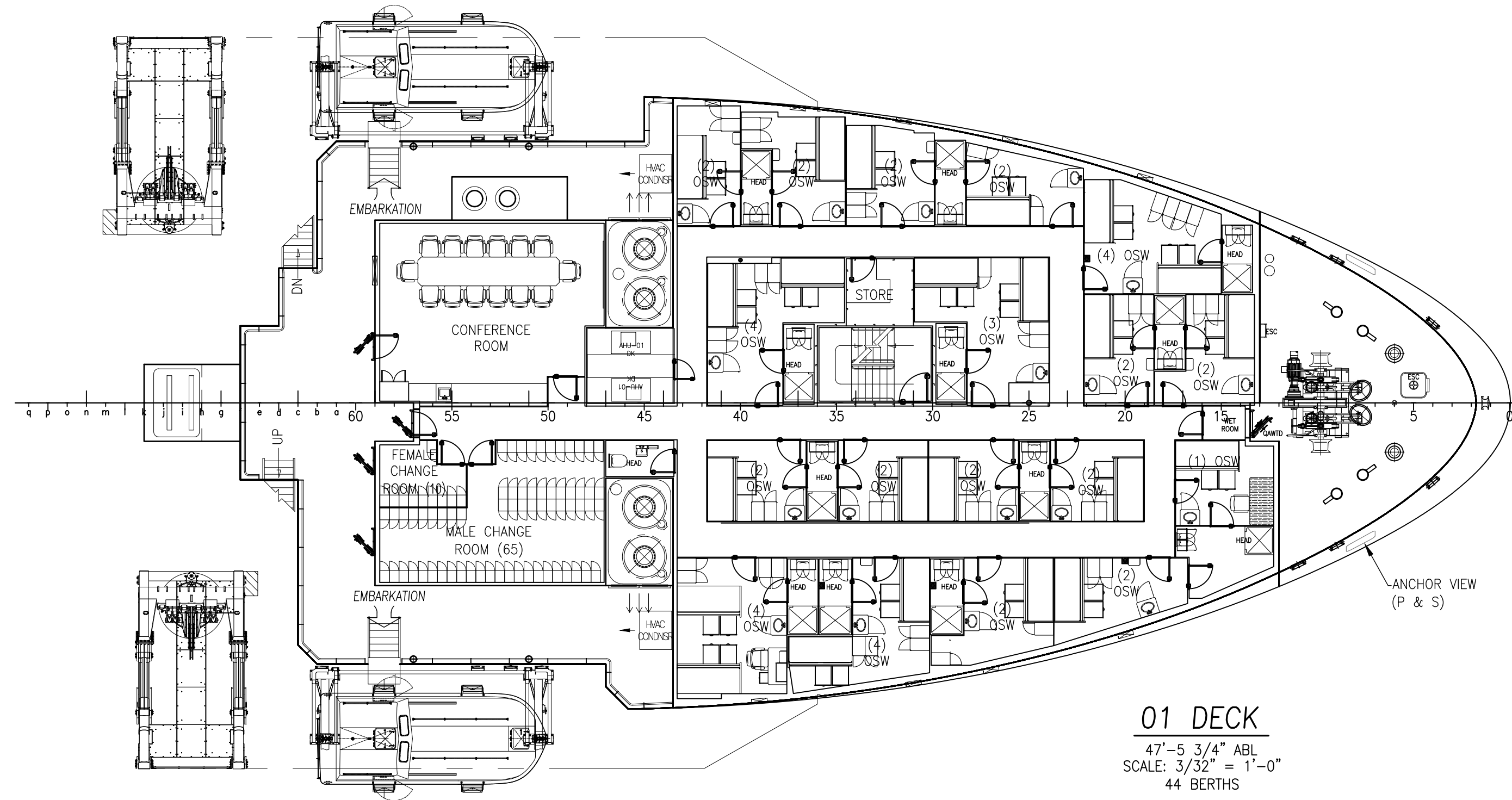
SCALE: 1/16" = 1'-0"

A

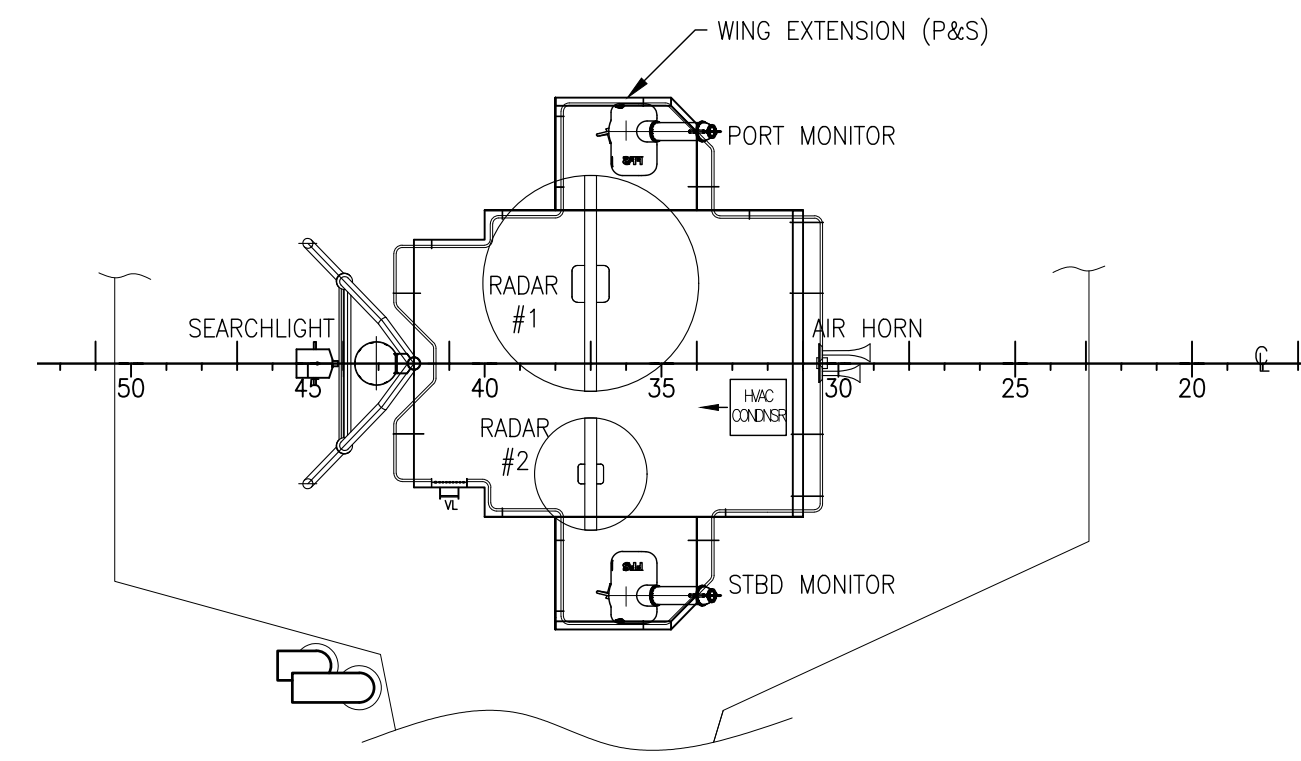
A

	THIS DRAWING, DESIGN CONCEPT AND SPECIFICATIONS ARE THE PROPERTY OF HORNBECK OFFSHORE SERVICES AND ARE FURNISHED ON A CONFIDENTIAL BASIS WITH AN EXPRESSED UNDERSTANDING THAT THEY WILL NOT BE COPIED IN ANY MANNER USED FOR MANUFACTURE, SALE, TRANSFERRED, NOR USED TO THE DETRIMENT OF SAID FIRM WITHOUT WRITTEN PERMISSION.			HORNBECK OFFSHORE SERVICES
	OUTBOARD PROFILE & GENERAL ARRANGEMENT			
	TASK No. 8028	DRAWING No. 1.001	SCALE: AS NOTED DATE: 01/06/21	
	HULL No. 369	SY: ESG	SHEET 3 OF 5	

SIZE D
REV. 1.1

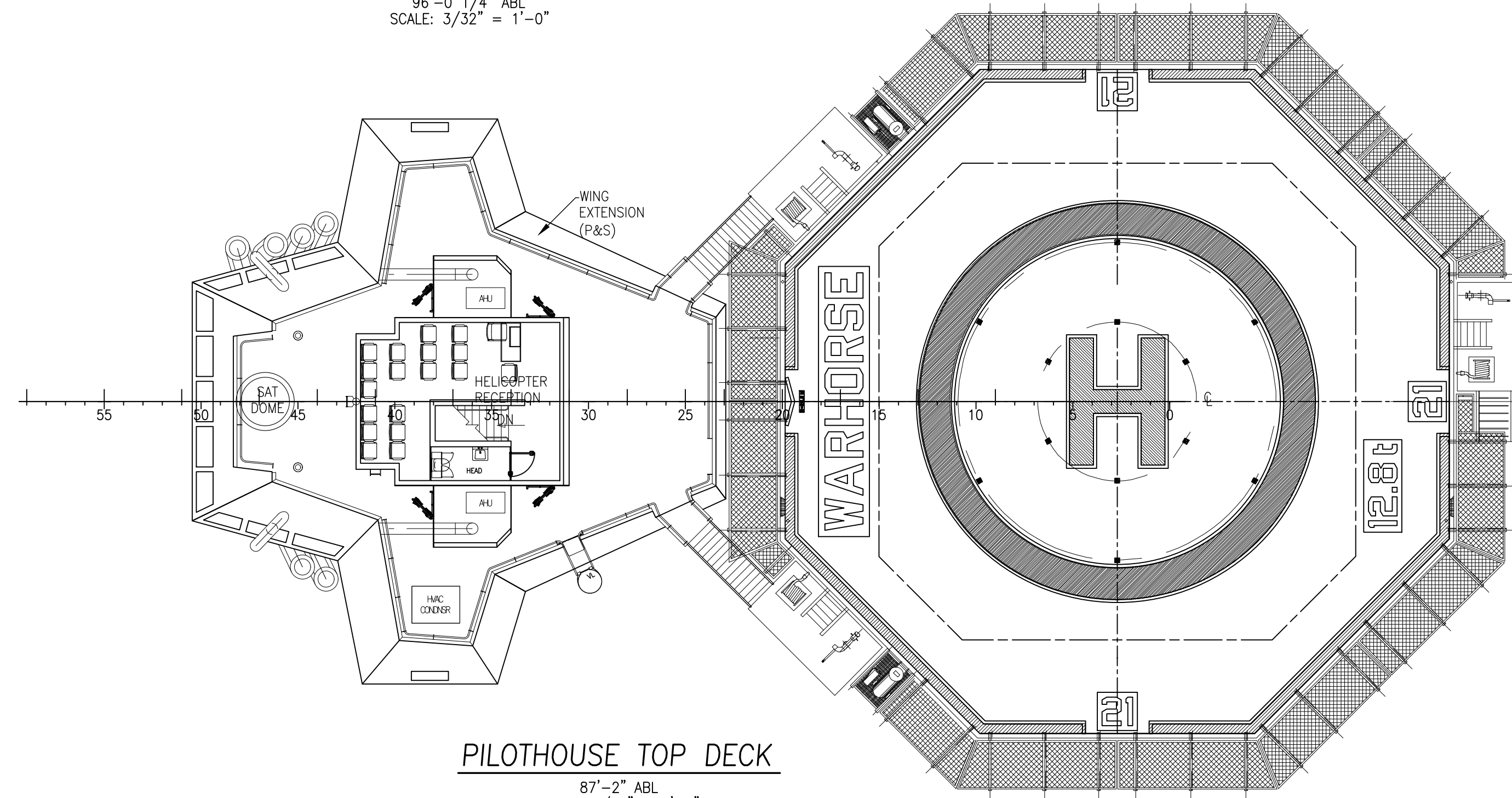


<p>HORNBECK OFFSHORE SERVICES</p>	THIS DRAWING, DESIGN CONCEPT AND SPECIFICATIONS ARE THE PROPERTY OF HORNBECK OFFSHORE SERVICES AND ARE FURNISHED ON A CONFIDENTIAL BASIS WITH AN EXPRESSED UNDERSTANDING THAT THEY WILL NOT BE COPIED IN ANY MANNER USED FOR MANUFACTURE, SALE, TRANSFERRED, NOR USED TO THE DETRIMENT OF SAID FIRM WITHOUT WRITTEN PERMISSION.			OUTBOARD PROFILE & GENERAL ARRANGEMENT	SIZE D
	TASK No. 8028	DRAWING No. 1.001	SCALE: AS NOTED DATE: 01/06/21	REV. 1.1	
	HULL No. 369	SY: ESG	SHEET 4 OF 5		



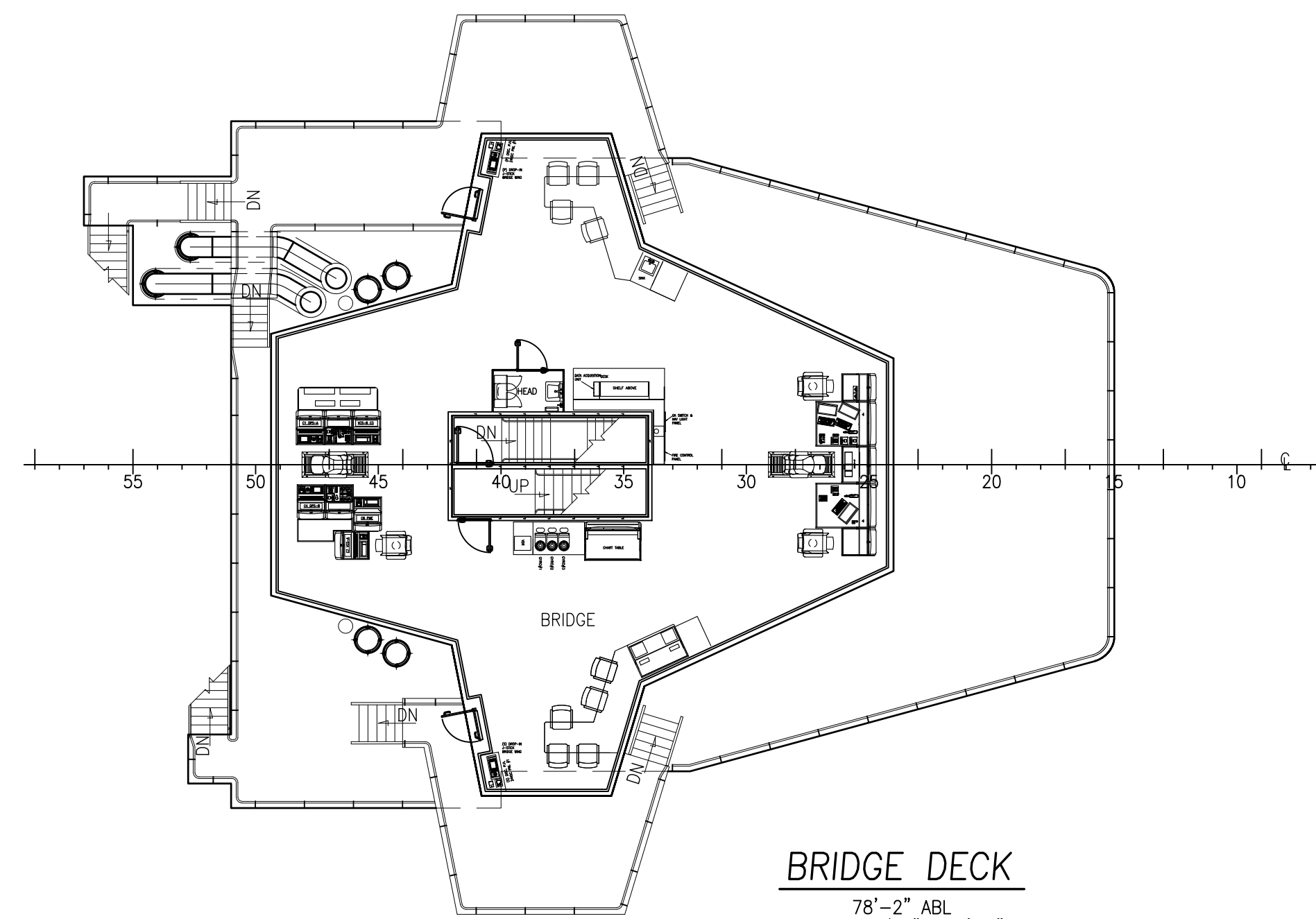
HELIDECK RECEPTION TOP

96'-0 1/4" ABL
SCALE: 3/32" = 1'-0"



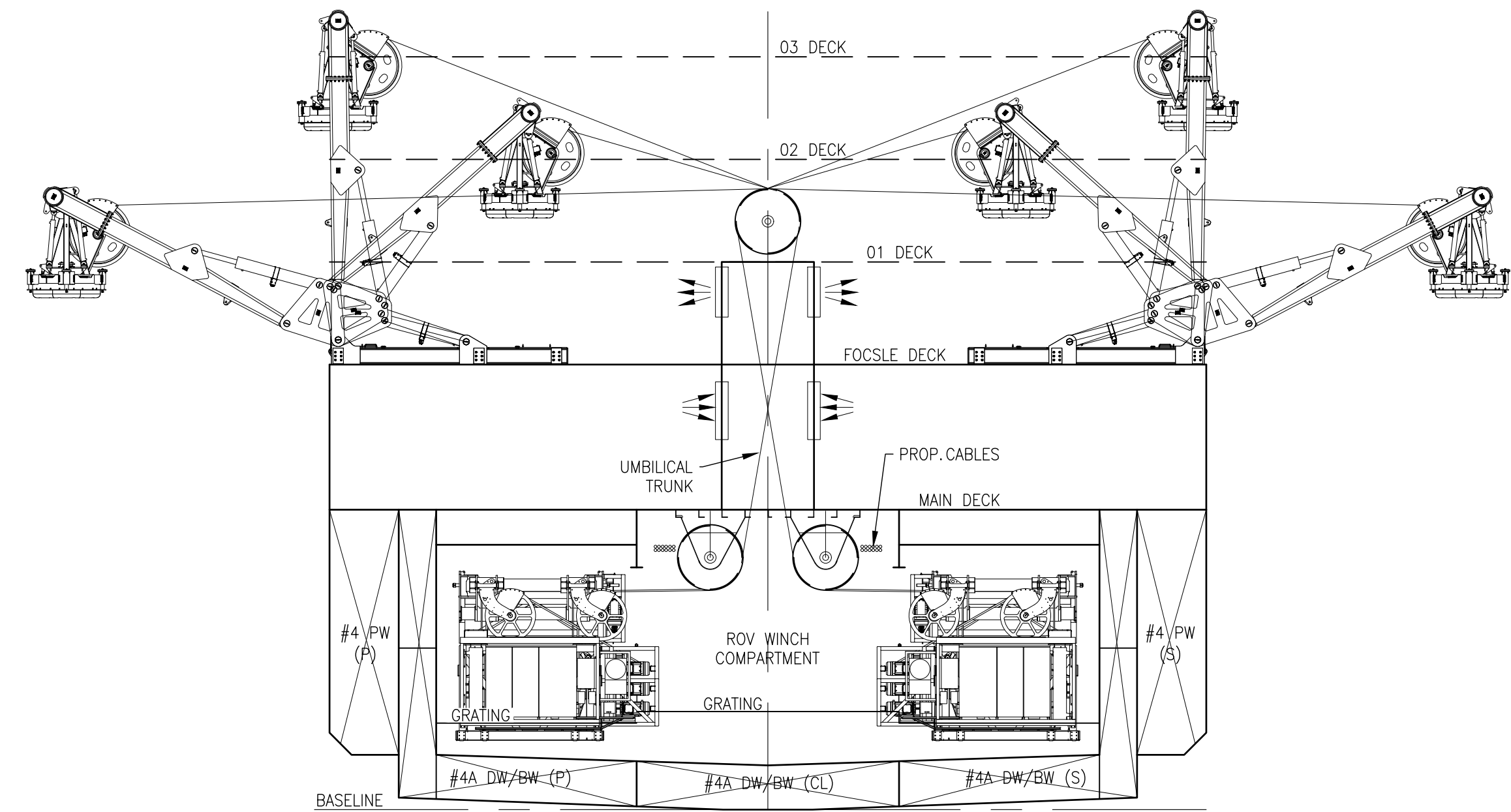
PILOTHOUSE TOP DECK

87'-2" ABL
SCALE: 3/32" = 1'-0"



BRIDGE DECK

78'-2" ABL
SCALE: 3/32" = 1'-0"



SECTION AR FR J

LOOKING FWD
ROV WINCH & UMBILICAL ARRANGEMENT
SCALE: 3/32" = 1'-0"